



MINISTERUL
TINERETULUI
ȘI SPORTULUI



Let's Paddle Romania!

Application to host the

2021

**ICF CANOE MARATHON
WORLD CHAMPIONSHIPS**



Table of Contents

1. Welcoming and support	p. 3
2. Romanian Candidacy	p. 4
3. Romania and Pitesti, the host city of the 2021 ICF Canoe Marathon World Championships.	p. 6
4. 2021 ICF Canoe Marathon World Championships.	p. 18
5. Participants	p. 22
6. PR, Communication, Media, Marketing	p. 26
7. Preparations for 2021 ICF Canoe Marathon World Championships	p. 30

Annexes..... p.32

(please find them in the attached files)

1. Letter of the Ministry for Sports and Youth
2. The Budget Foecst



Mr. Ioan BIRLADEANU
President of Romanian Canoe Federation

In long term strategy 2012-2020 Romanian Canoe Federation proposed development of all disciplines in canoe, Canoe Marathon and Dragon Boat being priority. Since 2008 (Gyor,HU.) we attended with 1-2 teams at European Championships and last year Romania attended with four teams, K1, K2, Juniors and C1,2 masters to Canoe Marathon World Championships Brandenburg-Germany. Also from 2016 we organize The Romanian Marathon National Championships Juniors and Seniors in Bascov-Pitesti Regatta Course.

We believe that until 2021 we have enough experience and under the guidance of the Marathon Competition Committee lead by Mr. President Jorn Cronberg we can organize in good conditions The ICF Marathon World Championships.

After 40 years the Romanian Canoe Federation had received the right to organize in 2015 international level competition - **The European Championships for Juniors & U23** and after views of the participants the competition was very well organized. This year we expect a new challenge that in July to organize **The ICF Canoe Sprint World Championships Juniors & U23 Pitesti - Bascov 27-30.07.2017**, the competition that we are convinced that we will organize in the best conditions.

The increased popularity of kayaking and canoeing in Romania led media to look at 2015 as being the paddling year in our country under the umbrella of "Let's Paddle Romania!" brand.

Sport Ministry and local authorities decided to support financially and with logistics the Romanian Federation to apply for organizing a top world competition for a few years from now.

"Romanian Canoe Federation underlines that all public and many private partners in the region have a great deal of mobilization for our country candidature and we, honestly, hope that this major event will be organized by our federation."

"Please note that we have all the necessary funding for the ongoing year in order to reconstruct the arbitration tower, change the lighting facilities, make a photo-finish system acquisition, a full dredging of the lake and reconstruction in banks, cabins, building of home and underground wiring for all the necessary facilities. All those previously mentioned have been completed by the end of 2010, while the other constructions and repairing presented, will be completed in due time for the major competitions"

Therefore you may find below the Romanian application to organize the 2021 ICF Canoe Marathon World Championships.

We would gladly provide any further details you would consider necessary.

2. Romanian Candidacy

The Romanian Canoe Federation (R.C.F.)

(Federatia Romana de Kiac–Canoe)

Adress: No. 16 Vasile Conta street, district 2,
020954 Bucharest – ROMANIA

Phone: +40 372 764 519

Fax: +40 21 317 17 19

Website: <http://www.kiac.ro>

E-mail: romanian.canoe@gmail.com

Contact person: Mr. Toth Gheorghe
General Secretary of the Romanian Canoe Federation

Venue: Bascov – Budeasa, Arges County



The Reasons for a Romanian candidacy

In a country with tradition in sports, the first sports associations being founded in the middle of the 19th century, kayaking and canoeing have been practiced for a long time. The sports press inserts confirm the existence of water sports centers in Bucharest, Timisoara, Arad, Braila, Galati and Constanta after 1922. The first National Championship of Kayak followed by the participation of a Romanian team at the European Championships happened in 1932.

In time, our teams proved both their talent and abnegation in international. Competitions,winning precious medals for our country. In 1956, at Melbourne, for the first time in the history of these sports three Romanians won the Olympic gold medal. The first European Champion titles were won by Simion Ismailciuc and Dumitru Alexe at Gand, in 1957 while Ichim Lipalit and Livrente Calinov were the winners of the bronze medal in the same competition. The same Olympic and European champions won the World champion medals during the competition of Prague in 1968.

Ivan Patzaichin, coming from the Danube Delta, won four times the Olympic Champion title (Mexico City – 1968, Munchen – 1972, Moscow – 1980 and Los Angeles – 1984) and seven times this title between 1970 and 1983.

Other great names, such as Leon Rotman, Vasile Daba, Florin Popescu, Mitica Pricop and our latest world champions in Poznan, Liviu Dumitrescu and Victor Mihalachi, are associated with other numerous gold medals in this discipline.

The last important event held in Romania, The 1965 European Championships took place in Snagov. Since then, for almost twenty years, our country organized only international regattas. Our great athlete – Ivan Patzaichin's retirement became official during Bascov – Course in 1984. That year marked the inauguration of our venue.

The Romanian Canoe Federation – R.C.F. (Federatia Romana de Kaiac – Canoe) was officially founded in 1936, being recognized and affiliated to the International Canoe Federation (I.C.F.) in 1950, The European Canoe Association (E.C.A.) and The Balkans Canoe Commission. It is organized and runs as the solely sports specialized structure at national scale in conformity with the statutes and regulations of the previously mentioned authorities.

Part of our strategy plan is the continuous development of our infrastructure so that we have proper basis to promote and develop our sports and its popularity especially to the youth, but not only. Moreover, R.C.F. is willing to continuously promote its activity and image while our athletes' outstanding results confirmed in time our work on these coordinates.

Thanks to our national and local authorities support we are entitled to confirm that we are prepared to welcome our competitors and be the messengers of the well-known Romanian hospitality and fair-play across this competition.

We would be proud, given our team's efforts and merits across the years, to mark this way a new beginning in our sprint racing competition life.

3. Romania and Pitesti, the host city of the ICF World Championships Seniors 2021



The Romanian Flag



Coat of Arms

Romania is a country located at the crossroads of Central and Southeastern Europe, North of the Balkan Peninsula, on the Lower Danube, within and outside the Carpathian arch, bordering on the Black Sea. Our neighbors are: Hungary to the Northwest, Serbia to the Southwest, Ukraine to the North, Republic of Moldova to the Northeast and East, and Bulgaria to the South.



It's provinces are: Transylvania in the Northwest, Moldova (Moldavia) in the Northeast, Muntenia in the South including Oltenia in the Southwest and Dobrogea in the Southeast, opening to the Black Sea and including the fabulous Danube Delta.

At 238,391 square kilometers (92,043 sq mi), Romania is the ninth largest country of the European Union by area and has the 7th largest population of the European Union with 21.5 million people. Its capital and largest city is Bucharest - Romanian: București, the 6th largest city in the EU with about 2 million people.

Short history

The Kingdom of Romania emerged when the principalities of Moldavia and Wallachia were united under Prince Alexandru Ioan Cuza in 1859 and later, under the Hohenzollern monarchy. The independence from the Ottoman Empire was declared on May 9, 1877, and was internationally recognized the following year. At the end of the First World War, Transylvania, Bukovina and Bessarabia united with the Kingdom of Romania. Greater Romania emerged into an era of progression and prosperity that would continue until World War II. By the end of the War, many North-eastern areas

of Romania's territories were occupied by the Soviet Union, and Romania became a socialist country until 1989.

With the fall of the Iron Curtain and recently, after the 1989 Revolution, Romania started a series of political and economic reforms. After a decade of post-revolution economic problems, Romania made economic reforms and joined the European Union on January 1, 2007.

Politics

Romania is now an upper-middle income country with high human development, although within the European Union, Romania's income level remains one of the lowest.

The country is governed on the basis of multi-party democratic system and of the segregation of the legislative, executive and judicial powers.

Romania is a unitary parliamentary democratic republic where executive functions are held by prime minister. The president is elected by popular vote for maximum of two terms, and since the amendments in 2003, the terms are of five years. He appoints the prime minister, who in turn appoints the Council of Ministers. The legislative branch of the government, known as the Parliament, consists of two chambers – the Senate with 140 members, and the Chamber of Deputies with 346 members. The members of both chambers are elected every four years under a system of party-list proportional representation.

The justice system

It is independent of the other branches of government, and is made up of a hierarchical system of courts culminating in the High Court of Cassation and Justice, which is the supreme court of Romania. There are also courts of appeal, county courts and local courts. The Romanian judicial system is strongly influenced by the French model, considering that it is based on civil law and is inquisitorial in nature. The Constitutional Court is responsible for judging the compliance of laws and other state regulations to the Romanian Constitution, which is the fundamental law of the country.

Administrative divisions

Romania is divided into 41 counties and the municipality of Bucharest. Each county is administered by a county council, responsible for local affairs, as well as a prefect responsible for the administration of national affairs at the county level, which is appointed by the central government but cannot be a member of any political party.

Each county is further subdivided into cities and communes, that have own mayor and local council. There are a total of 319 cities and 2686 communes in Romania. A total of 103 of the larger cities have municipality statuses, which gives them greater administrative power over local affairs. The municipality of Bucharest enjoys a status on par to that of a county. It is divided into 6 sectors and has a prefect, a general mayor, and a general city council.

Foreign relations and security

Romania joined the North Atlantic Treaty Organization (NATO) on March 29, 2004, the European Union (EU) on January 1, 2007, while it had joined the International Monetary Fund and the World Bank in 1972, and is a founding member of the World Trade Organization.

The current government has stated its goal of strengthening ties with and helping other Eastern European countries (Moldova, Ukraine and Georgia) in the process of integration with the West. Romania has also made clear since the late 1990s that it supports NATO and EU membership for the democratic former Soviet republics in Eastern Europe and the Caucasus. Romania also declared its public support for Turkey, Croatia and Moldova joining the European Union. Because it has a large Hungarian minority, Romania has also developed strong relations with Hungary.

Geography

With a surface area of 238,391 square kilometers (92,043 sq mi), Romania is the largest country in South-eastern Europe and the 12th largest in Europe. Romania's terrain is distributed roughly equally between mountainous, hilly and lowland territories. The Carpathian Mountains dominate the centre of Romania, with 14 mountain ranges reaching over 2,000 m/6,600 ft. These are surrounded by the Moldavian and Transylvanian plateaus and Pannonia and Wallachia plains. Romania's geographical diversity has led to an accompanying diversity of flora and fauna.



A large part of Romania's border with Serbia and Bulgaria is formed by the Danube while Prut river, forms the border with the Republic of Moldova.



The Danube flows into the Black Sea within Romania's territory forming the Danube Delta, the 2nd largest and the best preserved delta in Europe. Other major rivers are Siret, Olt, and Mureș.

Environment

47% of the land area of the country is covered with natural and semi-natural ecosystems. Having the largest areas of undisturbed forest in Europe, their ecosystems indicate the presence of the full range of European forest fauna including 60% and 40% of all European brown bears and wolves, respectively. There are also almost 400 unique species of mammals, birds, reptiles and amphibians in Romania. The fauna consists of 33,792 species of animals.

There have been identified 3,700 plant species from which 1,253 are considered rare. The three major vegetation areas in Romania are the alpine zone, the forest zone and the steppe zone with characteristic vegetation: various species of oaks, sycamores, beeches, spruces, firs, willows, poplars, meadows and pines.

There are almost 10,000 km² (3,900 sq mi) (almost 5% of the total area) of protected areas in Romania covering 13 national parks and three biosphere reserves: the Danube Delta, Retezat National Park, and Rodna National Park. The Danube Delta has been declared a Biosphere Reserve in September 1990, a Ramsar site in May 1991, and over 50% of its area was placed on the World Heritage List in December 1991.

Climate

Romania has a climate that is transitional between temperate and continental, with four distinct seasons. The average annual temperature is 11°C (52°F) in the South and 8°C (46°F) in the North.

Spring is pleasant with cool mornings and nights and warm days. Summers are generally very warm to hot, with summer (June to August) average maximum temperatures in the lower-lying areas being around 28°C (82°F), with temperatures over 35°C (95°F) fairly common. Minima in lower-lying areas are around 16 C (61 F). Autumn is dry and cool, with fields and trees producing colorful foliage. Winters can be cold, with average maxima even in lower-lying areas being no more than 2 C (36 F) and below –15 C (5.0 F) in the highest mountains.

Precipitation is average with over 750 mm (30 in) per year only on the highest western mountains - much of it falling as snow, which allows for an extensive skiing industry.

Economy

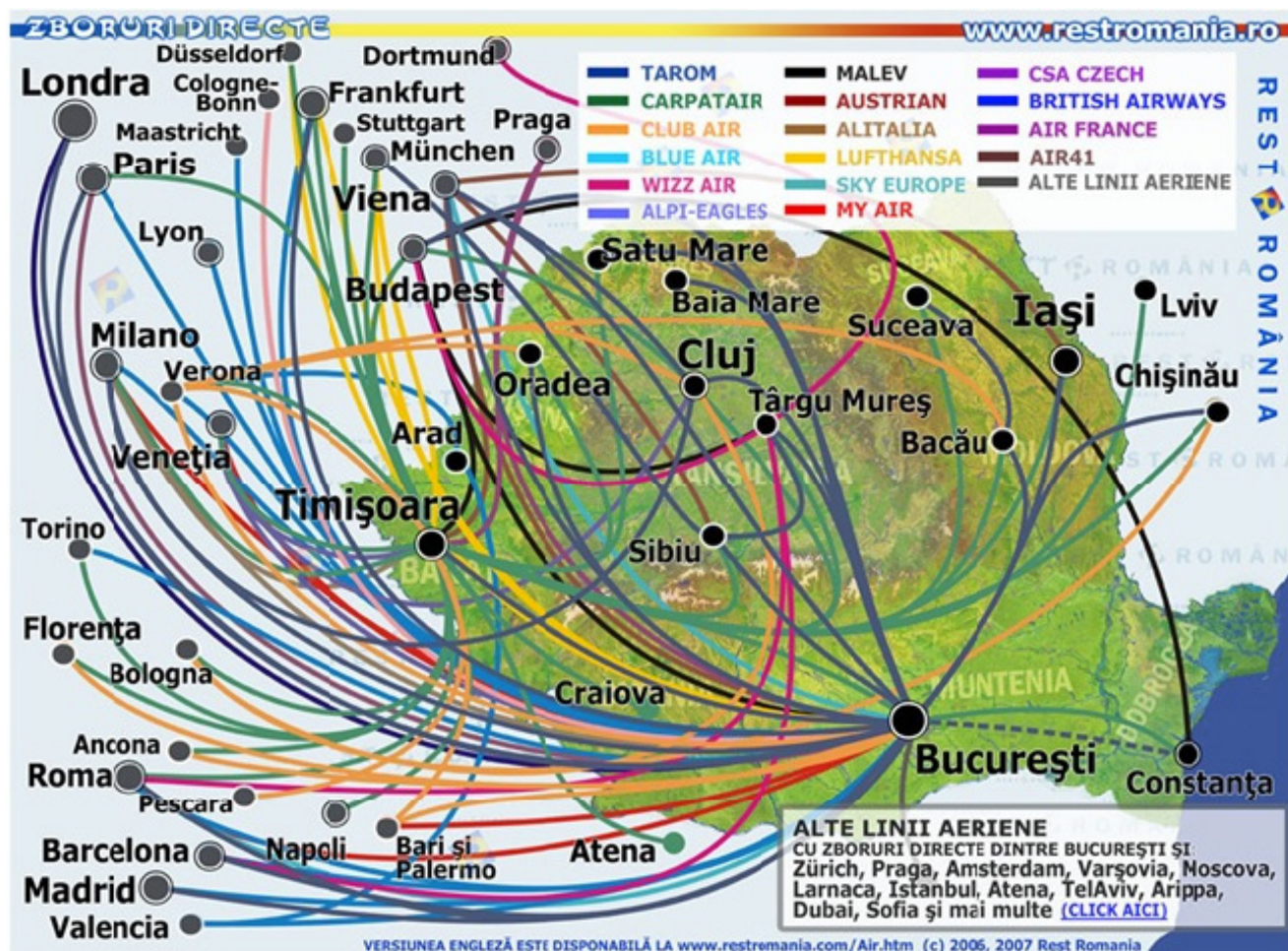
With a GDP of around \$271 billion and a GDP per capita (PPP) of \$12,600 for the year 2008, Romania is an upper-middle income country economy and has been part of the European Union since January 1, 2007. From 2000 onwards, however, the Romanian economy was transformed into one of relative macroeconomic stability, characterized by high growth, low unemployment and declining inflation. In 2006, GDP growth in real terms was recorded at 7.7%, one of the highest rates in Europe. The GDP growth fell to 2.9% in the fourth quarter of 2008 and stood at 7.1% for the whole year because of the financial crisis.

Yet, since 2000, Romania has attracted increasing foreign investment, becoming the single largest investment destination in South-eastern and Central Europe. Foreign investment was valued at €8.3 billion in 2006. A World Bank report of the same year ranks Romania the 55th out of 175 economies in the ease of doing business, scoring higher than other countries in the region such as the Czech Republic. It also considers it to be the world's second-fastest economic reformer (after Georgia).

Transport

Due to its location, Romania is a major crossroad for International economic exchange in Europe. The transport infrastructure although currently does not meet the current needs of a market economy and lags behind Western Europe. is under a fast developing program.

The infrastructure is rapidly improving and catching up with the standards of Trans- European transport networks. Several projects have been started with funding from grants from ISPA and from International Financial Institutions (World Bank, IMF, etc.) guaranteed by the state, to upgrade the main road corridors.



International air transport is facilitated by all major European companies through Romanian international airports of Bucharest, Iasi, Cluj and Timisoara where operate the most important flight companies worldwide. Apart from this, there are also internal flights so that the link between an international venue and country areas are easily done.

The most important Romanian companies operating internal flights on permanent basis are Tarom and Carpatair.

Apart from these, there are operating low cost companies such as: Blue Air, Air Nikky and Wizzair.

The railway transport is well connected to the European infrastructure so that coming to Romania by train is always a good choice.

The international airport Henry Coanda is connected to the venue through direct highway.



Demographics

In 2002, Romania had a population of 21,698,181. Like other countries in the region, its population is gradually declining in the coming years as a result of sub-replacement fertility rates. Romanians make up 89.5% of the population. The largest ethnic minorities are the Székelys and Hungarians, who make up 6.6% of the population and Romani people, who make up 2.46% of the population.

Hungarians constitute a majority in the counties of Harghita and Covasna. Ukrainians, Germans, Lipovans, Turks, Tatars, Serbs, Slovaks, Bulgarians, Croats, Greeks, Russians, Jews, Czechs, Poles, Italians, Armenians, as well as other ethnic groups, account for the remaining 1.4% of the population.

Languages

The official language of Romania is Romanian, an Eastern Romance language related to Italian, French, Spanish, Portuguese and Catalan. Romanian is spoken as a first language by 91% of the population. Hungarian is the most important minority language, spoken by 6.7% of the population, respectively.

There is also a substantial number of German-speaking Transylvanian Saxons, even though many have since emigrated to Germany, leaving only 45,000 native German speakers in Romania.

English and French are the main foreign languages taught in schools. English is spoken by 5 million Romanians, French is spoken by 4–5 million, and German, Italian and Spanish are each spoken by 1–2 million people.

Arges County,

Located in central-South area of Romania, Arges County is “cut” into two by the parallel 45° North latitude and is crossed by the meridian 25° East longitude.

With an area of 6826 square kilometres, Argeş represents 2.9% of the total area of Romania.

Fagaras Mountains (Southern Carpathians) are located in the North, with peaks Moldoveanu (2543m), Negoiu (2535 m) and Hunt’s Buteanu (2508m)

Main cities of the Arges County are:

- Pitesti (167,000 inhabitants)
- Campulung Muscel (37,000 inhabitants)
- Curtea de Arges (33,000 inhabitants)

County’s total population counts 639,157



Pitesti city, Arges County residence capital, with a population of 166,637 inhabitants, is situated in the Central-Southern part of Romania, between Southern Carpathians and the Danube, in the North-West of Muntenia, at the confluence of Arges river and Lady’s river, at the point of intersection of the parallel of 44°51’30” North latitude with the meridian of 24°52’ East longitude.

Pitesti city comprises about 16% of the existing museums (4 of 25) and over 20% of the total number of museums’ visitors recorded in Arges County, many cultural institutions, museums, churches and monuments, including:



County Museum and the first digital-type education planetarium in Romania, Arges County Library, Cultural Center, the Philharmonic, Bratianu Culture Center, Syndicates Culture Center House in Pitesti, People School of Arts and Crafts of Pitesti, Alexander Davila Theatre, Pitesti Military Circle, The Art Gallery, The Center of Preservation and Promotion of Traditional Culture of Arges, The Students’ House.



Pitești city is equivalent to “Tulips’ Symphony” Festival, the dendro-flowers exhibition and the symbol manifestation of this place that has for every edition visitors such as the public life officials from the country and diplomatic representatives from abroad.

In the sports domain, in Pitesti there are numerous dedicated structures including The Swimming Olympic Pool and a whole swimming complex, “Nicolae Dobrin” Stadium, the skating rink, the tennis court and football field, Polyvalent

Hall, The Heavy Athletics Complex, Bascov Nautical Complex, Arges Sports Museum.

Located between high hills on Arges River terraces Bascov village, our venue is situated in the western sector of the homonym Region.

The Bascov course is located 140 km away from Bucharest International Airport “Henri Coanda”, which means 1h and 20 min by bus on the highway.

The surroundings have a calm and moderate climate with an annual average temperature ranging between 9-10 degrees, in January average being -2,4 degrees and in July 20,8 degrees.

Well connected with major neighboring cities road and rail transport infrastructure – Pitesti – the largest town near Bascov – our venue, is located at the crossroads being a communication hub with international opening.

The connection with our important cities and towns, including Bucharest, the capital of Romania is provided by European Roads E81/DNA1.

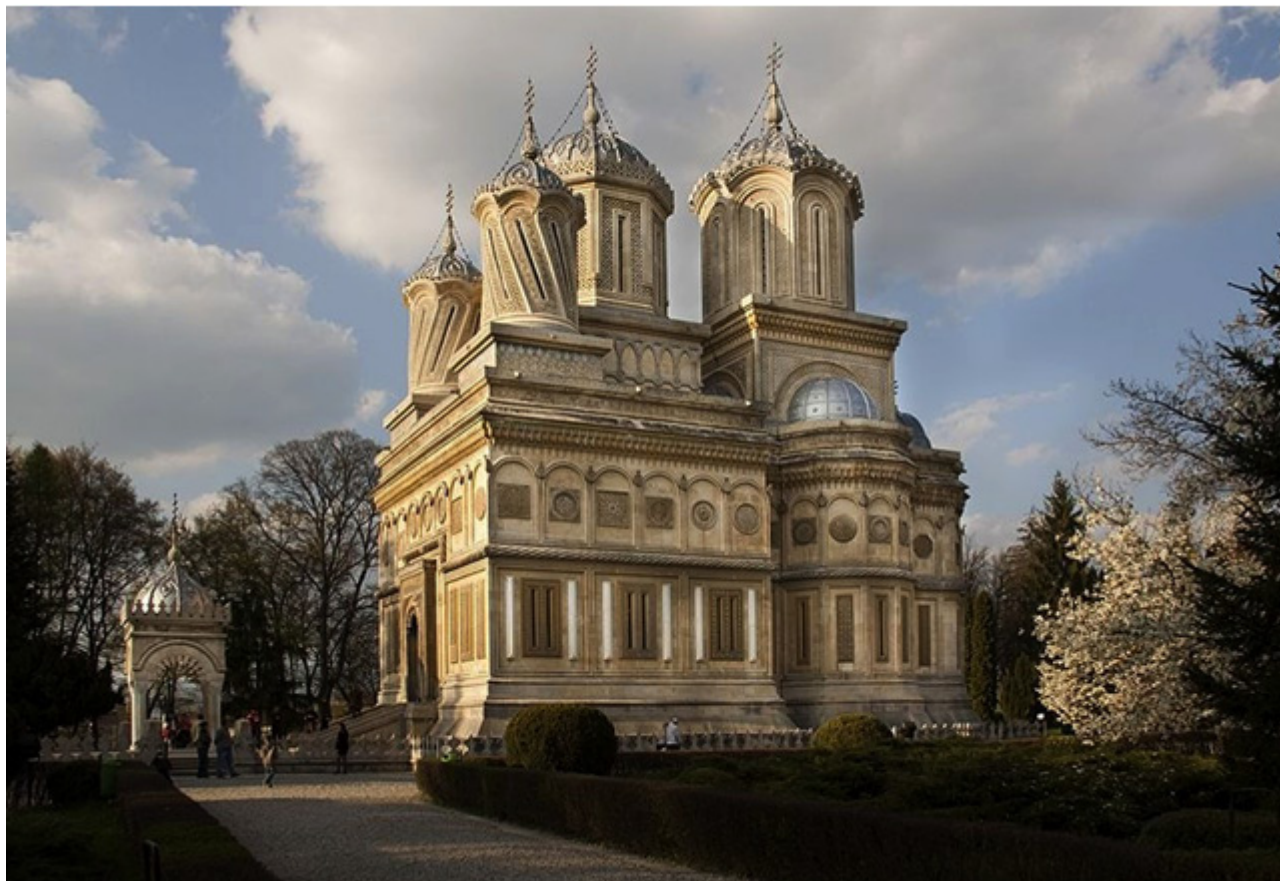
This course is located 140 km away from Bucharest International Airport “Henri Coanda”, which means 1h 20min by bus on the highway.

No matter if you come by plane, train or car, the venue is really easy to locate as it is close to the capital of Romania and the nearest city, Pitesti, offers a wide range of accommodation facilities as well as cultural opportunities for your spare time schedule.

Social Program

The organizers plan to have a reception after the opening ceremony and before the competition program starts. The VIP's and delegations' officials as well as their families are invited to take part in this event which marks a beginning in our hosting experience.

Yet, as the surroundings offer a lot of possibilities to experience travelling, sightseeing and cultural objectives, the Romanian host took in consideration the following options:



Visiting Curtea de Argeș Monastery - The Cathedral of Curtea de Argeș (early 16th century) is a church in Curtea de Argeș, Romania, located (on)in the grounds of a monastery and situated at 37 kilometers far from Pitesti (30 minutes to go by car). It is dedicated to Saint Nicholas.

It resembles a very large and elaborate mausoleum, built in Byzantine style, with Moorish arabesques.

In shape it is oblong, with a many-sided annex at the back. Each of its summits is crowned by an inverted pear-shaped stone, bearing a triple cross, emblematic of the Trinity.

One tablet records that the founder was Prince Neagoe Basarab (1512-1521). Being one of the most important architectonic monuments of Romania, the monastery holds the most popular legend – Master Manole's Legend - about the way it was built.

Also here rest the remains of Ferdinand and Kings Charles I, and the Queens Elizabeth and Mary.

Visiting the hydro energetic system and the lake of Vidraru



The most spectacular tourist attraction in the area, the dam of Vidraru is situated very close to Curtea de Arges, at approximately 27 km North. One can make a tour of the lake Vidraru on the left side (14 kilometers, unpaved) or on the right side (30 km, paved).

The beauty of the trip is represented by the road itself, like a serpent going up to the mountains top, crossing the Southern Carpathians and showing us an amazing beauty – the mountain in its astonishing splendor.

It is hard to believe that a road can bring so many beautiful sights in front of the eye.



It is a joy to see the weather changing and feel the fresh air of the top while admiring the human work in cutting ways in the rock, stop- ping the water from its course and making it work for our benefits. Vidraru is such a place and so is Balea chalet,



Bran Castle, situated near Bran and in the immediate vicinity of [Braşov](#), is a national monument and landmark in [Romania](#). Bran Castle is the most visited tourist attractions in Romania. People from all over the world come here hoping to meet [Dracula](#). Here, Vlad the Impaler (the ruler who sparked the Dracula legends) slaughtered hundreds of Saxons from Transylvania (people who lived there at that time). However, three years later after the mayhem, in the fall of 1462, the army of the Hungarian king Matei Corvin captured Vlad the Impaler. It appears that Vlad was taken to Bran Castle and locked up here for two months.

Bran Castle History

The actual construction of this stronghold began in 1377 on an old fortified settlement, in times when the Transylvania region (center of Romania) was part of the Hungarian Empire. The first ones who had seen the potential of this area were the Teutonic Knights who started here a smaller construction around the year 1220. For hundreds of years, this castle was used for battles and territorial conflicts in a military purpose. Only in 1920, [Queen Marie](#), one of the most beloved members of the royal family of Romania, started some very important restoration works which transformed Bran Castle into a true castle rather than a military stronghold as it had been until then.

Bran Castle, home for a Queen’s heart – for a while

The area around the Castle was turned into an English Park with two ponds and a Tea House. Other buildings were erected: a guesthouse, a wooden church, staff housing, stables and garage. After the death of queen Marie, her heart was placed in a silver box in the Bran Castle. The silver box was placed into a precious ornate box, which were then wrapped in the flags of Romania and of her native England and then placed in a marble sarcophagus. Nowadays, the heart is no longer in Bran Castle. Even though the legend of count Dracula (as Vlad the Impaler) has only a few links to the castle, you would be amazed to see how many symbols of vampires you would see in the area.

Legends of spirits haunting Bran Castle and the villages in the area

Nevertheless, even though some may find it disappointing not to meet Dracula here, there are however many legends among locals that tell terrifying stories of spirits. In the villages near Bran, there is a belief that evil spirits called ghosts or “strigoi” are walking around. Until half a century ago, it was believed that there existed certain *living* people – “strigoi” – who were leading a normal life during the day but at night, during their sleep, their souls left their bodies and haunted the village tormenting other people in their sleep. These evil spirits would haunt their prey from midnight until the first cockcrow, when their power to harm people faded.

For more history facts, enter the official website of [Bran Castle](#).

Other Details

Immigration and Customs Procedure

- As Romania is member of the EU there is no request for the participants from the European Union Countries.
- To ensure visa requirements each delegation should contact their Country Foreign Ministry.
- Each country must verify on The Romanian Embassy's Consulate Web if need entry visa.
- The Romanian Canoe Federation will be alleviated for all participants and that measures will be put into place to facilitate the process.

The Organizing Committee

For the organization of the 2021 ICF Canoe Sprint Seniors World Championships the Romanian Canoe Federation has signed a pre- agreement with a professional team endorsing in their portfolio a number of events:

- National events for leading companies starting with 2005 (AEGON Life Insurance, Air France, KLM Romania, Nokia, Mobexpert, DELL, Michelin Romania, Pepsi, Provident Financial, Romtelecom, etc.)
- Romanian Kayak and Canoe Regattas across the country

The Organizing Committee President is Mr. Ioan Birladeanu, the President of the Romania Canoe Federation and the Organizing Committee together with Mr.Gheorghe Toth General Secretary FRKC and Chief Manager nominated for each position might be changed according to Competition interest.

- **Organizing support**

- Contact with Delegations
- Marketing & PR
- IT and Communications
- Logistics (including Security)

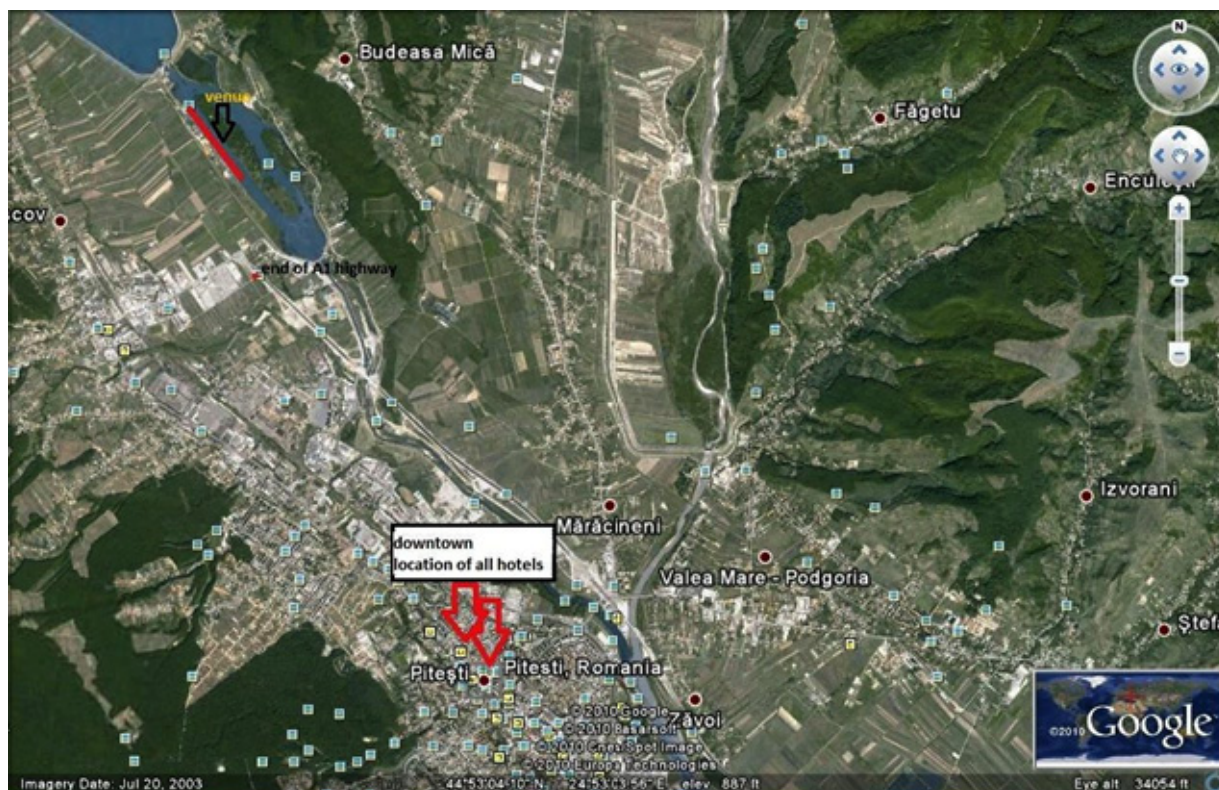
- **Professional**

- Boat support
- Medical Support
- Volunteers – students from Sports University Pitesti and former kayak professionals

4. 2021 ICF CANOE Marathon World Championships

Venue

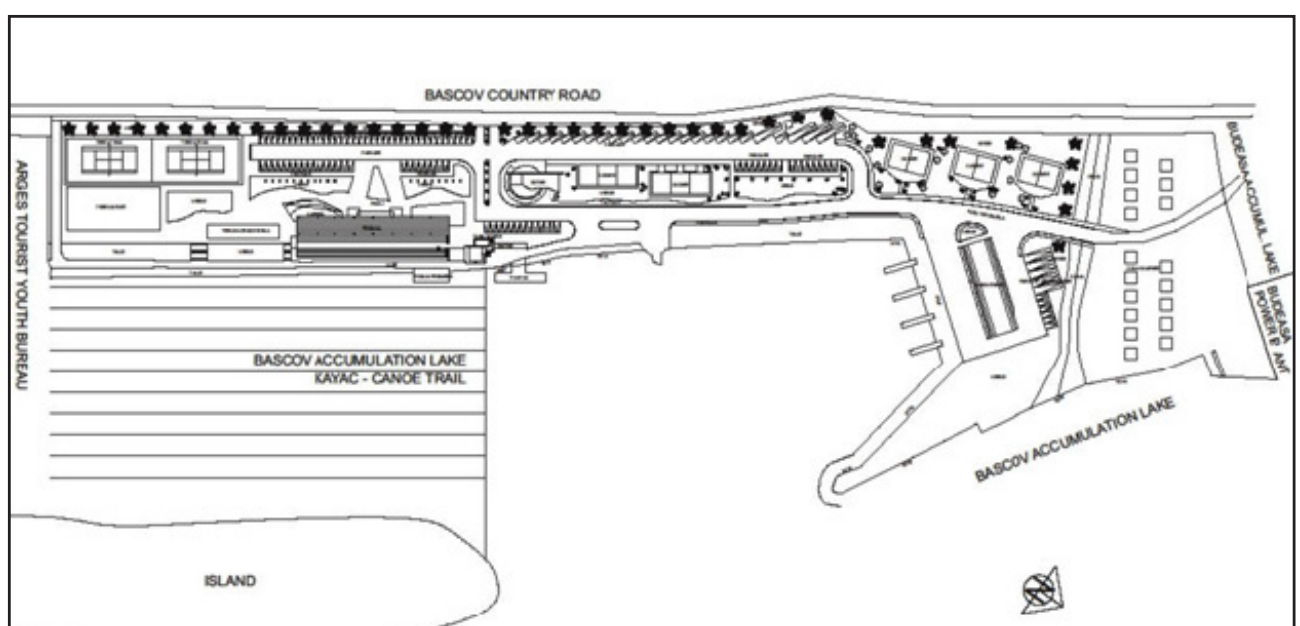
The Bascov-Budeasa course is located on a lake intended only for canoeing - it is situated after a dam and having an island in the middle.

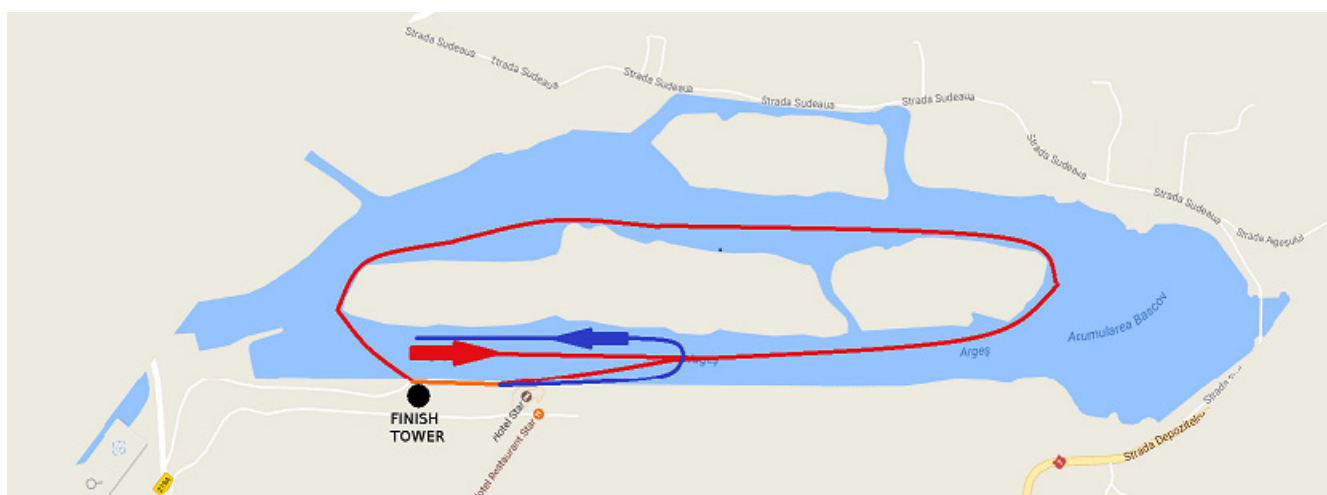
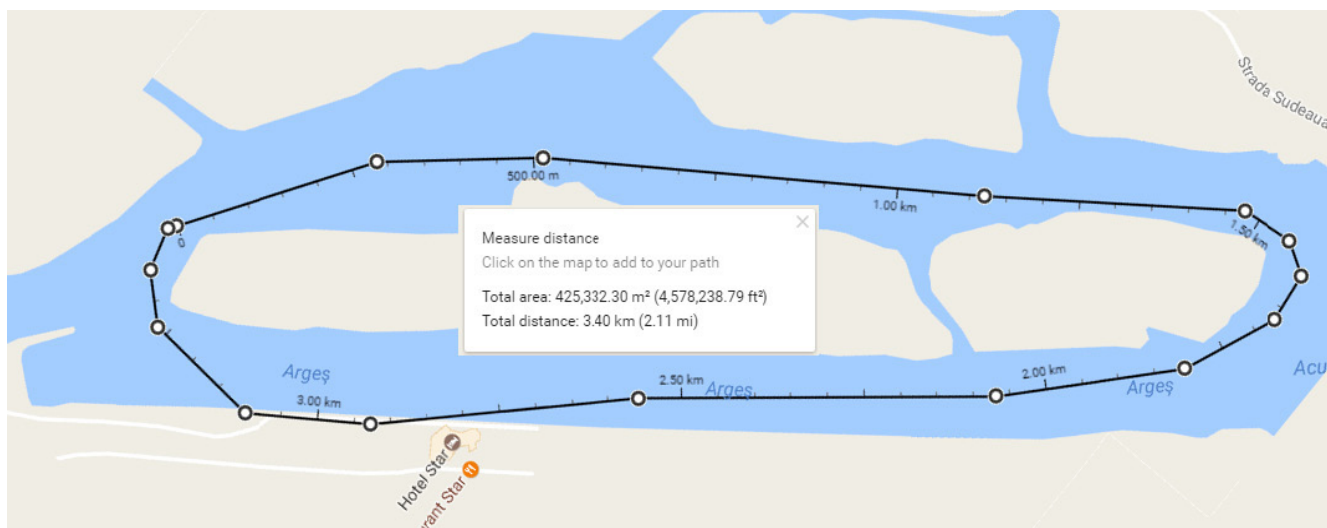


The plans of the sports complex are presented below.



Prospective from the lake: tower, pontoons in foreground, boat shed and accommodation facilities in background





Having been renewed and accessorized according to the I.C.F. regulations, the Bascov-Budeasa course will be ready to receive the delegations of participants to the Championships.

Competition Programme

The competition program will include Marathon events which will be decided by the ICF Competition Committee Through the Chairman of Committee Mr. Jorn Cronberg.

Evening Opening Ceremony

The opening ceremony will be held in the Central Market of Pitesti, on the same place where the Tulips Festival is held every year. The seats capacity in this location is up to 1000.

Sport / Competition Information

Bascov-Budeasa Sports Complex was built taking account of the technical requirements of the I.C.F.

At present, the following features have been received and are functional:

- 1000 seats tribune under reconstruction and extension
- Finish tower totally renovated in 2012
- New embarkation and disembarkation pontoon on the water
- Athletes' lockers and toilets under reconstruction
- Adjacent channel arranged for training and movement to the starting line
- Polaritas start system – three lines Polaritas Automatic Start System to be utilized upon request
- Medical and Doping Control Cabinet

Following the diligences of the R.C.F., the Ministry of Sports and Youth allocated funds for the Bascov-Budeasa Sports Complex modernizing in order to be included in the competitions circuit, as it follows:

Up to December 2018

- The photo finish and mobile start line will be under the contract according to each competition
- A boat house with a capacity of about 200 boats will be functional
- Another outgoing pontoon will be built
- Staff and volunteers training and preparation



5. Participants

Accommodation

- 1st category – 338 beds (***) and **** star hotels with A/C)
- 2nd category – 240 beds (** and *** star hotels with A/C)
- 3rd category – 180 beds (**star hotels)
- 4th category – 250 beds (motels)

Total: 1008 beds



All the hotels are on a radius of 500 m from the center of Pitesti (9 km from the venue. The hotel names are:

Muntenia, Victoria, Alcadibo, Yaki, Carmen, Sorelo, Star (Star Hotel is located at 1000 m from the venue next to the lake)



It is worthwhile mentioning that the venue is in the middle of a touristic area and on a radius of 35 km a number of 78 pensions can offer accommodation for supporters.

Transport

The delegations access to the venue of the delegations will be by plane, car or train.

Plane - nearest airports are:

- I. Bucharest International Henri Coanda – 125 km
- II. Sibiu International (Hermanstadt) – 160 km

Car

- III. Western Border (Hungary / Szeged) – 480 km
- III. South Border (Bulgaria / Ruse) – 156 km
- III. East Border (Moldavia) – 350 km

Train – direct access to the venue or trough Bucharest (110 km)

Romanian Canoe Federation will organize upon request the transport to/from the airports and railways stations ,payd by teams. - 25 EUR/person.

During the competition transport between hotels and venue will be organized by OCC. with dedicated companies (Paralela 45 and Dacos) for competitors and officials. Local transportation will be also available for supporters; taxis are available as well.

The main sponsor, Dacia – Renault Group, will provide dedicated limousines with drivers for VIP's and Dignitaries; the package also includes services for organized activities for participants at the Social Program, Families and Spouses.



Medical Services and Facilities

- Full time Medical Services will be provided during the competition at the venue and at the hotels by the partner – Scorseze - private provider.
- First aid services will be organized during trainings and races at the finish tower and boathouse.
- Rescue and Safety – professional lifeguards and diving will be full time service (A.N.S.P.S.R.).
- Doping Control – A.N.A.D. and Doping Control Laboratory of Bucharest will support the event having the capacity to perform as many doping tests as necessary.
- Local Hospitals situated very close to the competition area
 - County Emergency Hospital – Pitesti
 - Pediatric Hospital – Pitesti
 - Municipal Hospital – Curtea de Arges
 - apart of these, Pitesti Ambulance Service will be support us with ambulance cars onsite
- Physiotherapy Supports located inside the venue

Security

- Professional security company – Scorseze – is the partner of the event and will offer full time services at the venue and accommodation sites.
- Upon request security services will be provided to dedicated delegations.
- The event is organized with the full support of the local authorities, Police and Gendarmerie.
- Security instructions will be provided to delegations before arrival.

Language

- The official language in Romania is the Romanian, however a large majority of population speaks English and French.
- During the Competition the official language will be English all materials and documents being provided in English.
- To each Delegation the Organizers will allocate a Representative having also the role of translator.
- Upon request the Organizers might provide translators in any international language.

Participation Fee

The participation fee 30 EU/pers/day, will include the following services:

- Accommodation
- Three meals per day
- Shuttle bus service connecting the regatta course and the official hotels from the day of your arrival, according to timetable
- Accreditation fee
- Right of common and operational costs of the venue
- Participation at the opening ceremony
- Medical care at the course
- Security service at the course
- Fully comprehensive insurance of the event
- Access pass and parking for one trailer and one accredited vehicle (up to 3,5t)
- Mineral water during competition days

Category 1

- Single 120 EU.
- Double 105 EU.

Category 2

- Single 110 EU.
- Double 95 EU.

Category 3

- Single 90 EU.
- Double 75 EU.

All prices are expressed in euro per person per day

OCC. of WCS.2021 will cover accommodation and meal costs for all Officials

VIP's and Dignitaries

The venue is located in one of the most beautiful geographical and historical areas of Romania and the opportunities to visit the sites should not be ignored. Therefore dedicated host team will be allocated to VIP's and Dignitaries to guide upon the Organizers recommendations or requests.

Organizers will provide in advance full details of surrounding opportunities.

The main sponsor, Dacia – Renault Group, has already allocated a fleet of 4wd limousines for the event.



6. Marketing, PR and Media

Marketing plan

Promoting the ICF Canoe Sprint will be parallel on a national and also international level as through our collaboration with the ICF. One of the most challenging assignments for the coming years is to consciously build a brand around the canoe-kayak sports which will result in TV companies seeking the possibility to buy the rights to broadcast the event.

The promotional activities should be carried out as follows:

- intense media campaign throughout the country on public grounds
- giant posters (billboards)
- city light posters
- video spot on giant screens set up for advertising on public grounds
- video spots on TV channels with national coverage
- audio spots on radio channels with national coverage directed to our main target: the population with ages between 16 – 65, medium/upper studies, medium to high life style and mainly men
- banners on the sport sections of the biggest internet portals
- advertisement in dedicated sports newspapers and magazines
- printed material
- colored bulletin
- competition program

The media channels will take in consideration maximizing the coverage and target audience balancing also existing partnerships:

National communication and marketing

- Daily sports newspapers: ProSport & Gazeta Sporturilor
- Weekly magazines and newspapers
- Radio broadcasting station
- Public TV channels: TVR, ProTV, DIGI 1,2,3 TV, Eurosport, Realitatea TV, Prima
- Billboard, panelling in the traffic areas

Local communication

Pitesti has got several local communication supports – ATL: local TV stations, local radio stations and local newspapers; BTL – giant billboards, city light posters - to promote international sport events. Romanian Canoe Federation will have as partners The Romanian National Television.

Media

The organizing committee will decide on the partnership with the most fitted private company that will bring the maximum efficiency and network. It will be given the following missions: National press relations (in relationship with the Romanian Canoe Federation) and finding national partners. There will be daily press releases.

Two locations are reserved for the press: the press center and the press grandstand, both located near the finish tower.

Press Centre

The press center will be equipped with tables and on request with electrical connections for PC's and telephones.

- There would be wireless internet service in the press centre making it easier for every journalist to use their own laptops if they would like
- Additionally 5 computers with internet access via cable will also be on site
- One screen showing the pictures of the closed circuit TV-broadcast
- Buffet with soft drinks, tea, coffee

Mixed-zones

- Next to the pontoon at the second boat control exclusively for media partners and stockholders
- Next to the press center at the meeting point for medal ceremony

One of the key aspects of organizing an international event is providing for the media professionally and fast. Assisting the media will be done through the following channels:

- Official website of the 2018 ICF Canoe Sprint World Cup Race 2 and 2019 World Championship Jun.& U23. (to start in December 2016 and for 2017 World Champ.Jun.&U23)
- Link for professionals of the media
- Constant e-news service from the start of organizing the event
- ICF ISIS system: entries and registration for programs, results etc.

Press conferences, press releases

- Regular press releases starting from February, 2020 and continuously growing in frequency as the event is getting closer
- Press conferences

Internet and TV Coverage

For such an important event the R.C.F. will dedicate a special website subsequently accessible with a link from its own website. The information on this website will be updated in real time so that sports fans who cannot attend the competition site to have the latest news.

Meanwhile, the subsequent website will be featured with the option that, upon subscribing, it sends newsletters with the latest events via e-mail.

Needless to say how important the TV coverage of a sport event, not to mention any World Championships and Cups is. The decent coverage of sprint racing canoe– kayak sports in general is not an easy task and poses a special challenge because of the venues sheer size and the race distances that need to be covered.

Taking the TV coverage of the World Championships and Cups as a first base for developing the visual appearance of our sports on TV we are keen to explore new ways to present it.

By 2020 it will be agreed with the TV producer the number of cameras to be used to broadcast the events. These is the responsibility for the national television that will produce the international signal. TV coverage for the event will be specially designed with the TV producer. The process is in progress at the moment and it will be finalized in due time.

Operations and IT

There will be an operations/logistics center where the organizing team will be located. There will be a management team which, together with the Organizing Committee, will take active part in the event.

There is a Project/Marketing Manager running a structure responsible for the vision of this major event and an Operations Manager responsible for the logistics and also a PR Manager in charge of the PR dedicated structure. Once the bid won and the plan set up, the Operations Manager takes over the Supervision of the event. He coordinates all the needed actions, from security, to medical assistance for emergency cases, transport of the delegations and accommodation & social program. The managers of each specific structure will be under his control. He also priorities and organizes so that possible extreme situations can be avoided.

At the moment, the R.C.F. is analyzing the possibility to use a call center in order to manage the possible requests from outside structures or persons.

The stakeholders will be permanently kept informed about the backstage operations. They will also have the opportunity to participate in press conferences and share their experience in this event.

Look and Image

The image campaign will have a strictly delimited length, with a maximum display in media. It has to hold on target group in relation with established media objectives, so that the promotional materials about competition reach a distinct classical advertising TV, Radio, Press and unconventional advertising impact.

Sustainable Development

It is known that water sports do not create environment pollution by themselves. Yet, as we expect a great number of visitors – spectators and sports delegations – for this event, we are aware that all these will create noise and leave garbage behind.

As the noise will not disturb the area inhabitants due to the course position outside Bascov and Budeasa villages, the main attention will be focused on garbage.

A security sub-structure will take care of the environment, making sure that possible visitors will not arrange barbecue, exposing the environment to uncontrolled fire and will not leave garbage behind, using the special recipients and amenities to collect the trash. They will also take care of uncontrolled actions of the supporters, which may lead to noise and violence.

The mayors of the two villages – Bascov and Budeasa – arranged with the local sanitation company to use its full capacity during the competition days in order to maintain the site clean. The garbage will be transported in a special place outside the area.

The local gendarmerie and police forces will come along the private security company offering their support along the competition.

Financing

A competition at international scale such as these championships involves a very big responsibility for the organizers. This is why, being at our first experience of the kind, are doing all the diligences in order to have the proper funding for the whole event – on one side – and to ensure the best quality services as well as synergy between all the organizing parties.

Please find our estimated budget in the Annex.

Sport presentation and services

As stipulated before, the competition will be promoted in local and national media, in order to draw the interest of the public.

Scheduled public bus is available between Pitesti and Bascov. Onsite there will be kiosks with food and beverages for the spectators. Apart from this, organizers and sponsors will distribute promotional materials (fliers, brochures, badges, caps, etc.). Some of the gadgets will be available for sales, too.

Spectators will be able to access only the grand stand area. For the public the entrance will be free of charge. Hopefully this facility together with the other strategic promotional actions the OC will take will make this exceptional sports event very attractive for the public, especially the youth.

7. Preparations for 2021 ICF Canoe Marathon World Championship

Following Board visit in October 2013 and Mr. Vaskuti Istvan number of improving points have been highlighted in order to be solved by RCF.

In this year we invite to Pitesti on Mr. Jorn Cronberg President of Marathon Competition Committee to establish what it takes anymore to improve the regatta cours.

A number of positive findings have been already inserted in above material and represents strengths for the Romanian candidacy such as:

- This lake is only for canoeing and fishing
- The venue is after a big and high dam, the course being on the lake after the dam
- In the middle of the lake there is an island separating the course to the warming up and cooling down channel
- Cross over at the 500m
- Cross over at the 900m
- The Romanian Canoe Federation has strong contact with the community regarding the water planning during races. One week before the races the dam will be closed and there will be no running water.
- The venue contains enough places for tents and trailers
- In case of very bad weather the organization can place a big pontoon
- All the categories hotels have been checked.
- (most of them having air-conditioning)
- The prices for Bed and Breakfast are very low and close to the Venue.
- RCF already started preparation and training of staff and volunteers for full process of organization of Championships from the beginning till the end; this means from the accreditation to the Medal Presentation the last days.
- Increase and train more Officials to be prepared before 2021
- Adjust finish tower design accordingly



- Renovation of the tribune as can be seen in photos bellow

SUMMARY – WHY CHOOSING ROMANIA

- Easy access from Europe and Worldwide
- Easy access to the venue
- Support from local authorities, Government and Olympic Committee
- High level of Sponsors involvement
- Attractive prices
- Modern venue and course
- High level of quality services for safety and medical support
- Participants personal safety
- Great people

Waiting for you in Romania!



Annexes





CONSILIUL JUDEȚEAN ARGEȘ

CABINET PREȘEDINTE

Pitești, Piața Vasile Milea, Cod 110053, Nr. 1, Camera 155
www.cjarges.ro presedinte@cjarges.ro
Telefon: 0248.210.056 Fax: 0248.220.137



Nr. 1262/27.01.2017

To The Kaiak – Canoe Romanian Federation,
To the attention of the president, Ioan Birlădeanu

Dear Mr. President,

We wish to congratulate you for your openness and cooperation initiative in the activities carried out so far, all of which contribute to the promotion of Argeș county nationally and internationally, Argeș becoming known for the quality and diversity of the sports basis and the hospitality within the organization of the cultural and sports events.

Therefore, we wish to assure you of our support and to express our agreement in principle, concerning the applying of the Romanian Federation of Kayak – Canoe to the International Canoe Federation (ICF) in view of the assignment of organizing the Seniors World Maraton Championships in 2021 and wish you to be successful in starting this particular project.

Sincerely yours,

President of Argeș County Council,
Constantin Dan MANU



FEDERATIA ROMANA DE KAIAC CANOE
**ESTIMATE OF EXPENDITURE FOR THE ORGANIZATION
2021 ICF CANOE MARATHON WORLD CHAMPIONSHIPS**

THE NAME OF THE EXPENDITURE	Finantare MTS	Venituri proprii
RENT SERVICES		
Medical service - ambulance,medics etc.	15,000	
Rent electronic devices and IT asistens	40,000	
Rent tent and kaiak-canoe materials	20,000	
Securyti services		50,000
ICF competition fee	45,000	
Opening ceremony and reword ceremony	0	20,000
Accreditation expenses		20,000
Rent eco toilets	18,000	
Resque quard team, motor boats ,divers	20,000	20,000
PROMOTION MATERIALS		
Printed promotion materilials	20,000	15,000
Gift for VIP and sponzors	13,800	
Mascot objects and promotions,	15,000	10,000
Medals ,cups,gift for rewarding ceremony	25,000	10,000
Advertisements with competion logo (street &city)	5,000	10,000
The expendables for printing competition documents	15,000	10,000
Transport services		
Transport local		35,000
Transport international oficiali ICF si ECA		40,000
Accommodation and meal services		
Hotels +meals ICF ITO	25,500	10,000
Hotel + meals ROU offials	25,500	
Cheltuieli masa oficiala 200 persoane	13,500	10,000
Hotel+meal voluntars	45,000	10,000
Hotel+meals romanian athlethes		750,000
Hotel+meals Team Romania	20,000	
Others expenses		
Payment drivera,medics, others	60,000	
Snake,beverage,coffe,refreshments	15,600	5,000
Competition guaranty		
Water,juices athletes	10,000	10,000
Bank charges, currency cost,bank commissions		10,000
ITO uniform		5,000
Presents for ITO's ICF'officials,others		7,000
Airport parking fee and city taxes		5,000
Uniforms for volunteers and help personal		7,000
Uniforms organizing committee	10,000	
Total lei	476,900	1,069,000

138,000 EU

252,555 EU.

* the Currency is Romanian Lei

PRESIDENT
Ioan Birladeanu

Cheef accountant,
Mariana Ilie